

FRITZ HANSEN



CHRISTIANSHAVN™

Fritz Hansen is proud to present Christianshavn, our new exclusive textile designed in house. Christianshavn is a timeless and tone in tone collection of colors that over time can develop as the collection expands.

With Christianshavn, Fritz Hansen aims to set trends and design directions interpreted by Fritz Hansen for Fritz Hansen, ensuring that it compliments all our products.

DESIGNED BY FRITZ HANSEN FOR FRITZ HANSEN

The history of Fritz Hansen began in 1872, where the enterprising cabinet-maker Fritz Hansen obtained a trade license in Copenhagen. 1885 was a significant year, when he started a furniture production company of his own and two years later he had managed to establish a flourishing workshop in Christianshavn™ – a central part of Copenhagen. Fritz and his son Christian initiated the high quality level which has been the trademark of Fritz Hansen's products ever since. So, with the launch of Christianshavn Fritz Hansen proudly celebrates its legacy and history as manufacturer and design leader.

The nascence of Fritz Hansen's own textile underlines the design universe that defines the very core of Fritz Hansen: to create an experience and shape a complete world rather than merely produce furniture. With Christianshavn, the design process does not end until the last stitch has been made. In other words, the Fritz Hansen design DNA is now reflected in both the shape of the shell and the feel of the textile. Creating an entire design experience – that is Fritz Hansen's metier.

DESIGN
Fritz Hansen, 2018



Christianshavn is strong in durability yet light in its appearance. The concept of Christianshavn is to introduce a durable and appealing material to enhance the shape of the products and underline their timelessness – both in terms of aesthetics and longevity.

FRITZ HANSEN

MATERIALS

With Christianshavn Fritz Hansen is proud to have created a wool textile with a beautiful soft touch.

WHY USE A WOOL MIX?

Fritz Hansen has a significant history of working with wool which dates back to the workshop in Christianshavn. The complex craftsmanship found in some of the most iconic lounge chairs demands the use of high-quality materials along with meticulous upholstery skills. With Christianshavn, both strength and density are keywords and the mix of wool and nylon offers a soft touch rather than the traditional roughness that characterises hardwearing wool.



TECHNICAL SPECIFICATIONS

TYPE
UPHOLSTERY

FIELDS OF APPLICATION
Home and contract

MATERIAL COMPOSITION
85% wools of New Zealand
15% polyamide

WEIGHT
465 g/lm. (15 oz/lin.yd.)

WIDTH
140 cm / 55" inches

ABRASION RESISTANCE
200.000 Martindale rubs
BS EN 14465
BS EN ISO 12947-2

PILLING
4 (scale 1-5, max 5)
EN ISO 12945-2

COLOUR FASTNESS TO LIGHT
5-7 (scale 1-8, max 8)
EN ISO 105 - B02

COLOUR FASTNESS TO RUBBING
4-5 (scale 1-5, max 5)
EN ISO 105×12 (wet/dry)

MAINTENANCE
dry cleaning P (S)



FLAME RESISTANCE
EN 1021 1&2
BS 5852 0&1
BS 5852 Crib 5

Will also pass other flammability standards. Flame retardant performance is dependent upon the foam used. Contain no Flame Retardant chemical.

Subject to changes and color differences. More and updated specification: fritzhansen.com



FRITZ HANSEN

THE COLOURS

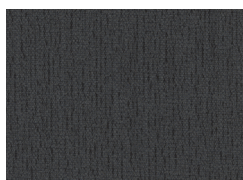
Christianshavn is presented in a palette of 26 beautiful colours – from the classic tone-on-tone to the bolder, brighter shades. The palette journeys through three colour genres: calm pastels, blue-grey tones and bright colours. Some colours are unicolour – perfect for the simple, elegant expression that enhances the shape of a design – and some are melange, where triple threading offers both a playful appearance and a fresh look, even after years of usage.



BLACK UNI
CHRISTIANSHAVN 1175



DARK GREY
CHRISTIANSHAVN 1174



GREY
CHRISTIANSHAVN 1173



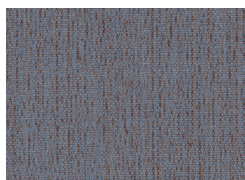
GREY UNI
CHRISTIANSHAVN 1172



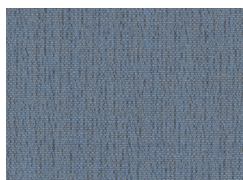
LIGHT GREY
CHRISTIANSHAVN 1171



LIGHT GREY UNI
CHRISTIANSHAVN 1170



ORANGE/BLUE
CHRISTIANSHAVN 1150



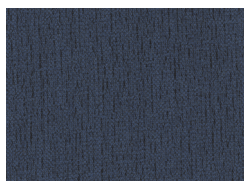
LIGHT BLUE
CHRISTIANSHAVN 1152



LIGHT BLUE UNI
CHRISTIANSHAVN 1151



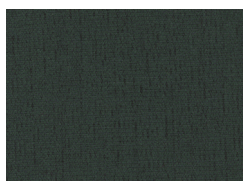
BLUE UNI
CHRISTIANSHAVN 1153



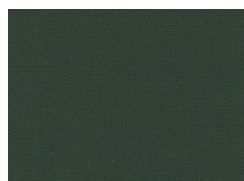
BLUE
CHRISTIANSHAVN 1154



DARK BLUE
CHRISTIANSHAVN 1155



DARK GREEN
CHRISTIANSHAVN 1161



DARK GREEN UNI
CHRISTIANSHAVN 1160



DARK RED UNI
CHRISTIANSHAVN 1142



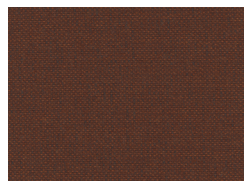
RED
CHRISTIANSHAVN 1141



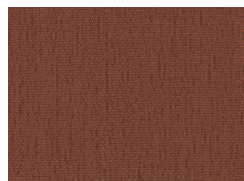
RED UNI
CHRISTIANSHAVN 1140



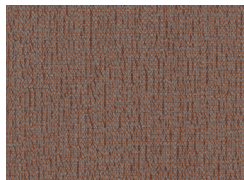
BLUE/ORANGE
CHRISTIANSHAVN 1135



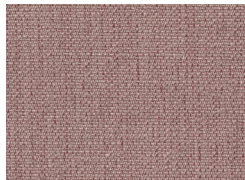
DARK ORANGE
CHRISTIANSHAVN 1134



ORANGE
CHRISTIANSHAVN 1133



BEIGE/ORANGE
CHRISTIANSHAVN 1132



ORANGE/RED
CHRISTIANSHAVN 1131



LIGHT RED UNI
CHRISTIANSHAVN 1130



BEIGE
CHRISTIANSHAVN 1121



LIGHT BEIGE
CHRISTIANSHAVN 1120



YELLOW
CHRISTIANSHAVN 1110